

Solutions for Plan Sponsors

Rely on FactSet to support every stage of your unique workflow, including tools to help you view manager performance, find new managers, and make adjustments to your plan.

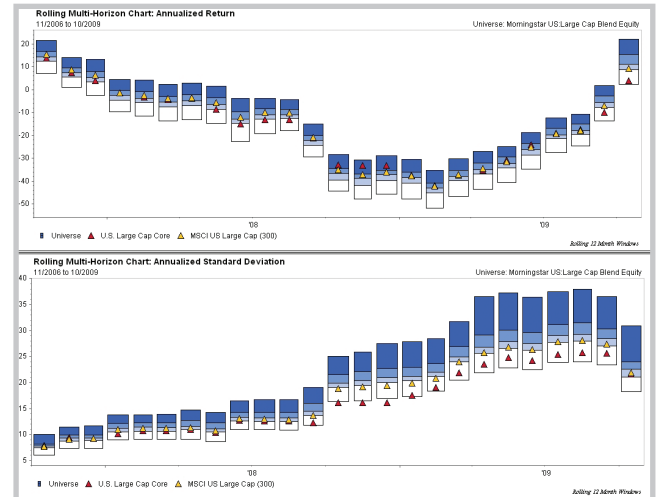
Our solutions provide a consolidated platform where you can monitor and analyze manager performance, composition, and fundamental tilts, along with overall asset allocation. Search on and investigate potential new managers and understand how they fit within the plan, and evaluate the impact of proposed adjustments to the asset allocation of the plan.

Monitor Existing Managers

FactSet can provide an overview of multiple portfolios in a single report. Group your managers by asset allocation or investment style. Set up custom columns to view performance, composition, characteristics, and risk of each of your managers and the groups to which they belong. Proactively monitor your managers by setting up alerts to immediately highlight portfolios that have crossed performance or data thresholds.

Use FactSet to form a complete understanding of your managers or composites of managers. From a holdings-based perspective, analyze how any manager's decisions or the manager's selection and allocation affected the performance

of an individual portfolio or the entire plan. Gain insight into the how the manager's decisions and the plan construction contribute to risk.



Compare managers' performance and risk relative to their peers through time.

FactSet uses manager and composite returns to help you perform style, historical risk, and performance analysis and measure managers relative to their peer groups.

Portfolio Dashboard																	
Portfolios	Today			Year to Date			Characteristics			Risk			Returns				
	Total Return	Bench. Total Return	Excess Return	Total Return	Bench. Total Return	Excess Return	Market Cap.	P/E	Div. Yield	Tracking Error	Stock Specific Risk	Factor Risk	1 Year Ann. Return	1 Y Rank	3 Year Ann. Return	3 Y Rank	Info Ratio
International																	
International Equity	.29	.19	.10	25.22	31.08	-5.85	52,150	26.4	3.1	2.61	.59	6.23	21.38	84	-4.56	52	-15
International Quant	.10	.25	-.15	--	38.74	10.95	30,360	26.2	3.5	7.29	22.78	30.30	32.88	20	-3.47	33	-30
Canadian Equity	.56	.32	.24	58.95	51.02	7.93	22,727	32.9	2.0	5.76	18.42	14.70	23.53	--	2.02	--	-.27
U.S.																	
U.S. Equity Composite	.42	.34	.08	19.38	27.04	-7.66	65,004	30.3	1.8	4.13	7.66	9.42	9.24	95	-5.49	89	-.07
U.S. Large Cap																	
U.S. Large Cap Composit	-.45	.03	-.48	16.70	24.53	-7.83	122,126	26.1	2.2	5.00	15.04	17.27	21.23	34	-.32	1	1.08
U.S. Large Cap Core	-.47	.03	-.50	15.67	24.53	-8.85	119,947	25.6	2.2	5.41	24.85	9.11	9.24	93	-5.49	61	-10
U.S. Large Cap Growth	.04	.42	-.38	26.70	33.77	-7.07	119,430	24.4	1.9	9.16	56.48	25.29	17.62	51	-.40	1	.27
U.S. Large Cap Value	-.88	-.34	-.54	9.27	15.89	-6.62	125,943	28.1	2.5	7.11	45.90	55.07	6.17	93	-5.56	35	.37
U.S. Small Cap																	
U.S. Small Cap Composit	1.40	1.01	.40	22.54	23.15	-.61	2,575	35.7	1.3	7.74	14.80	45.11	7.88	95	-4.51	62	.46
U.S. Small Cap Core	1.73	1.01	.72	21.54	23.15	-1.61	3,085	34.9	1.1	8.24	21.42	46.64	7.88	73	-4.51	26	.46
U.S. Small Cap Growth	1.41	1.23	.18	34.50	30.05	4.45	2,618	30.0	.4	9.95	65.62	33.66	19.00	32	.23	2	.96
U.S. Small Cap Value	.79	.80	-.01	11.24	16.90	-5.66	1,529	44.6	2.9	9.48	19.88	69.92	2.27	91	-8.60	62	.10

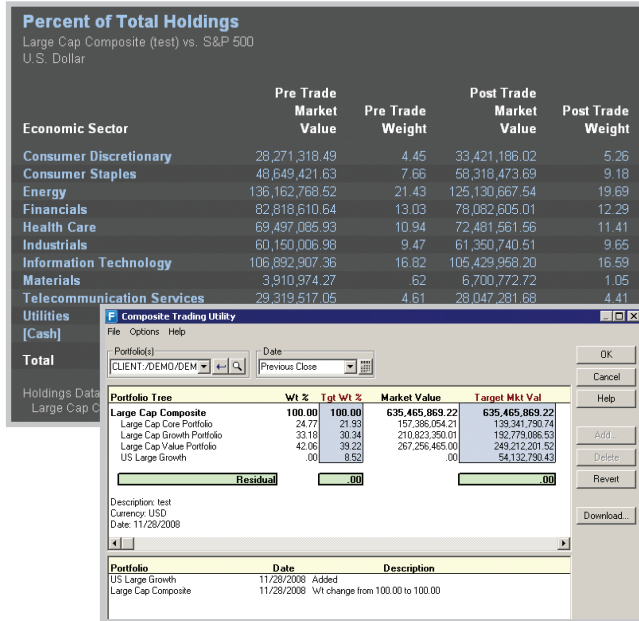
Set up a multi-manager view and create custom performance and risk columns.

Search for New Managers

FactSet's fund screening lets you easily identify new managers to add to your plan. Search within manager universes provided by PSN, RogersCasey, eVestment Alliance, Russell, or Lipper.

Change Managers Within Your Plan

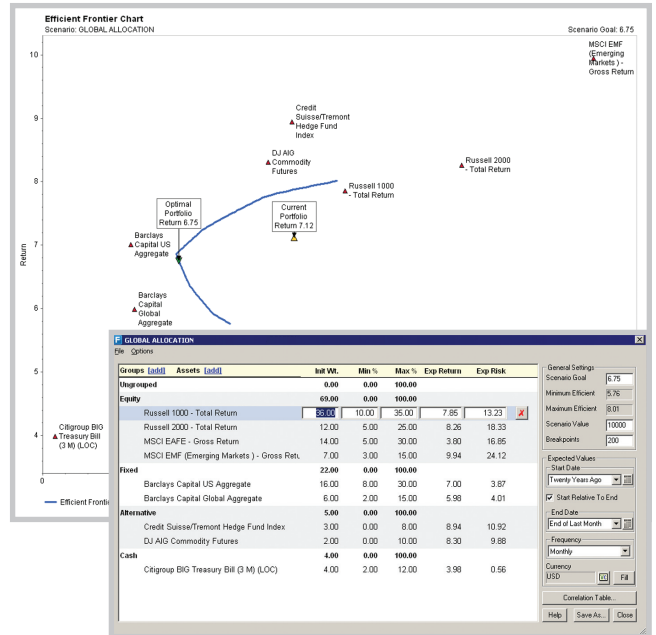
When changing managers, you need to understand what the effect will be to the overall plan before you execute your manager changes. FactSet provides "what if" tools that will let you examine the effect that new manager allocations will have on the plan. Understand the full impact on your plan before making changes.



Add and adjust existing managers in your plan and view the effect these changes will have immediately.

Change the Investment Policy of Your Plan

FactSet's returns-based Efficient Frontiers analysis focuses on creating optimal portfolios from a set of asset classes and constraints, such as asset returns (historical or expected), risk, and weight. You can use this functionality to monitor investment style and to view how adjustments to that style will affect your overall plan. You can create and view optimal portfolios at various risk/return levels. Use reports and charts over various time frames to focus on their weightings and expected risk and returns.



Optimize your asset allocation by applying Efficient Frontiers analysis to minimize risk and maximize return.

The FactSet Difference

To communicate results among your team, FactSet helps you create presentation-ready documents full of qualitative information and quantitative analytics.

To monitor new funds and assess the best funds for your plan, you need the most comprehensive fund information possible. FactSet combines hundreds of databases, benchmarks, and analytics for you to choose from, on a single platform. Finally, FactSet provides specialized training sessions and support is available 24 hours a day, seven days a week to ensure that you can take advantage of all of the tools available.