

Gain visibility with

# FactSet Mutual Funds



FactSet Mutual Funds is an ideal distribution channel for you to market your fund information directly to a large, highly targeted community of institutional buy-side investors.

FactSet publishes and disseminates Mutual Funds data provided by major fund managers in more than 50 countries. The information is fully integrated into the FactSet platform, letting users quickly and easily select the data they want to see.

This innovative database is designed to provide portfolio details for equity mutual funds. Asset managers can use this free service to publish their fund information on FactSet and gain visibility with more than 40,000 FactSet clients around the world, most notably Wealth Managers, Fund of Funds, Pension Funds, and Sovereign Funds.

## Contribute to an Industry-Leading Database

FactSet is a leading provider of portfolio publishing tools to asset managers worldwide. With FactSet's Mutual Fund information, professional investors can run their own analysis and selection process based on the allocation of funds. FactSet integrates content from more than 900 databases on a single platform to offer one of the most comprehensive workflow solutions in the industry for publishing mutual fund data.

FactSet helps major U.S., European, and Asian fund managers publish detailed investment portfolios. Once the fund details are received by our team and incorporated in the FactSet Mutual Fund database, the information is visible in various FactSet applications. Users can analyze and compare what they see in a standard format to streamline their workflow and ensure consistency.

**Performance Attribution**  
International Equity Mutual Funds vs. MSCI World  
U.S. Dollar

	International Equity Mutual Funds			MSCI World			Variation			Attribution Analysis	
	Port. Average Weight	Port. Total Return	Port. Contrib. To Return	Bench. Average Weight	Bench. Total Return	Bench. Contrib. To Return	Average Weight Difference	Total Return Difference	Contrib. Difference	Allocation Effect	Selection Effect
<b>Total</b>	100.00	-7.34	-7.34	100.00	-6.94	-6.94	--	-.40	-.40	-.87	-.18
<b>Africa</b>	2.59	-5.22	-.13	--	--	--	2.59	-5.22	-.13	.05	--
Fidelity Emerging Markets Fund	2.17	-5.44	-.11	--	--	--	2.17	-5.44	-.11	.04	--
Fidelity Worldwide Fund	.41	-4.06	-.02	--	--	--	.41	-4.06	-.02	.01	--
African Rainbow Minerals Lt	.12	-10.44	-.01	--	--	--	.12	-10.44	-.01	-.00	--
AngloGold Ashanti Ltd. (ADS)	.10	.31	.00	--	--	--	.10	.31	.00	.01	--
Naspers Ltd.	.08	-.18	.00	--	--	--	.08	-.18	.00	.01	--
Woolworths Holdings Ltd.	.12	-3.60	-.00	--	--	--	.12	-3.60	-.00	.00	--
<b>Central Asia</b>	2.25	-5.79	-.13	--	--	--	2.25	-5.79	-.13	.03	--
<b>Eastern Europe</b>	4.24	-9.40	-.40	.01	-19.32	-.00	4.22	9.92	-.40	-.55	.00
<b>Middle East</b>	1.94	-6.19	-.12	--	--	--	1.94	-6.19	-.12	.01	--
<b>North America</b>	38.93	-6.37	-2.48	55.83	-5.47	-3.05	-16.90	-.89	.57	-.24	-.49
<b>Pacific Rim</b>	23.24	-6.52	-1.55	18.05	-7.56	-1.25	7.19	1.04	-.31	-.06	.18
<b>South America</b>	4.17	-12.45	-.52	--	--	--	4.17	-12.45	-.52	-.23	--
<b>Western Europe</b>	22.65	-8.95	-2.01	28.11	-9.39	-2.65	-5.45	.44	.64	.14	.13
<b>[Unassigned]</b>	.00	--	--	--	--	--	.00	--	--	-.00	--

Fund managers worldwide use data from FactSet's Mutual Funds database to analyze portfolio performance.

## Connect with Institutional Investors

Join the 3,000+ fund managers who are currently contributing more than 30,000 funds screened daily by professional investors worldwide.

FactSet's client network offers an ideal platform to promote your fund information among highly targeted user groups. Publication of your fund information on FactSet Mutual Funds is free. Contribute on a monthly basis to see immediate results:

- + **Increase exposure:** Market your key investment expertise to a broad network of institutional investors worldwide. Decide the desired frequency and embargo period of your contribution.

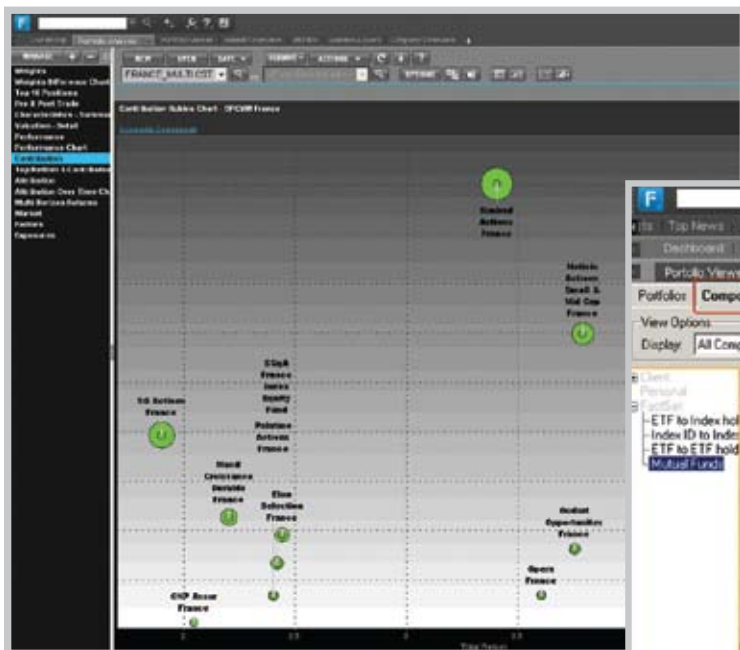
## Get Started Now

With FactSet, you can contribute on your own terms by choosing the fund families you wish to publish, and you can start or stop contribution at any time.

Choose how often you would like to publish your fund's detailed portfolio holdings in order to give clients and prospective investors the chance to run their analysis on the latest data. Although U.S. industry recommendations and international reporting standards often require quarterly reporting; most of our contributors now go beyond the legal requirement and publish full portfolio details monthly.

We can receive most file formats, and will work with you to streamline the transfer of your portfolio information. Fund buyers and investment advisors can access FactSet's Mutual Fund data through FactSet applications or via an XML-based data feed.

- + **Enhance service:** Allow your clients and prospective investors to go beyond the fund's performance and ratings data to refine their analysis and selection process by looking at the detailed asset allocation of each fund.
- + **Expand access:** Target and contact institutions that invest in specific sectors and regions that fall under your particular expertise, using the FactSet Fund Center screening tool.
- + **Gain insight:** Learn more about asset allocation trends and the latest investment preferences of the regions you're interested in with our quarterly mutual fund industry reports.



FactSet's Style, Performance, and Risk application allows users to access fund data for in-depth market comparisons and contribution analysis.

The figure shows a screenshot of the FactSet Portfolio Viewer application. The interface includes a top navigation bar with options like 'Portfolio Performance', 'YieldSheet', 'Trading', 'Earnings Monitor', and 'Company'. Below this, there are tabs for 'Composite Assets', 'Asset Types', 'Parsers', 'Parser Logs', 'FI Logs', 'FI Settings', and 'Reconciliation'. The main area displays a table of composite assets with columns for 'Id', 'Name', and 'Holdings Type'. The table lists various funds, including 'Balanced Polish Fund', 'Dynamic Polish Fund', 'Equity - Emerging Europe Fund', and 'Global Advice World Equities'.

Id	Name	Holdings Type
L5990U416	(LF) Balanced Polish Fund	Portfolio
LU0332272722	(LF) Equity - Dynamic Polish Fund	Portfolio
L5990T617	(LF) Equity - Emerging Europe Fund	Portfolio
L5990Q287	(LF) Equity - Flexi Style Greece	Portfolio
LU0273959709	(LF) Equity - Global Equities Fund Eurobank	Portfolio
LU0273962083	(LF) Equity - Greek Equities Fund Eurobank	Portfolio
LU0273965003	(LF) Equity - Institutional Portfolios Fund	Portfolio
LU0200070521	1. SICAV - Global Advice World Equities	Portfolio
DE00040MY0V4	11 Champions Ul	Portfolio
DE0009847616	14A - Fonds	Portfolio
ES0109642035	1948 Inversiones S.A.	Portfolio
ES0105157039	1955 Inversiones S.A.	Portfolio
LT1578105	1A Global Balanced	Portfolio
IE0030250447	20g Funds European Cap Gth Inst Eur	Portfolio
IE00B0N17869	20g Funds European Income Inst Shs A	Portfolio
AT0000A07HD9	3 BG - immo	Portfolio
A7495T102	3 BG EMCore Convertibles Global	Portfolio
AT00000712591	3 Banken America Stock - Mix	Portfolio
AT00000732961	3 Banken Asia Stock Mtr	Portfolio

**FACTSET**  
Transforming Information Into Intelligence

**About FactSet**  
FactSet is a leading provider of financial information and analytic applications to investment professionals around the globe.

**For More Information**  
To learn more about FactSet Mutual Funds, contact [factsetfundcenter@factset.com](mailto:factsetfundcenter@factset.com).

**Online**  
[www.factset.com](http://www.factset.com)